

The Lorekeeper's Trial: Teaching AI Literacy through Active Learning in the Library Classroom

CCLI, Monterey, CA

May 29, 2026

Taylor Greene, MLS, MA
Assistant Dean for Library AI Literacy and Instructional
Services

Doug Dechow, PhD, MSLIS
Associate Dean for Research and Data Services



CHAPMAN
UNIVERSITY

What is AI literacy?

AI literacy is the ability to understand, use, and think critically about AI technologies and their impact on society, ethics, and everyday life.

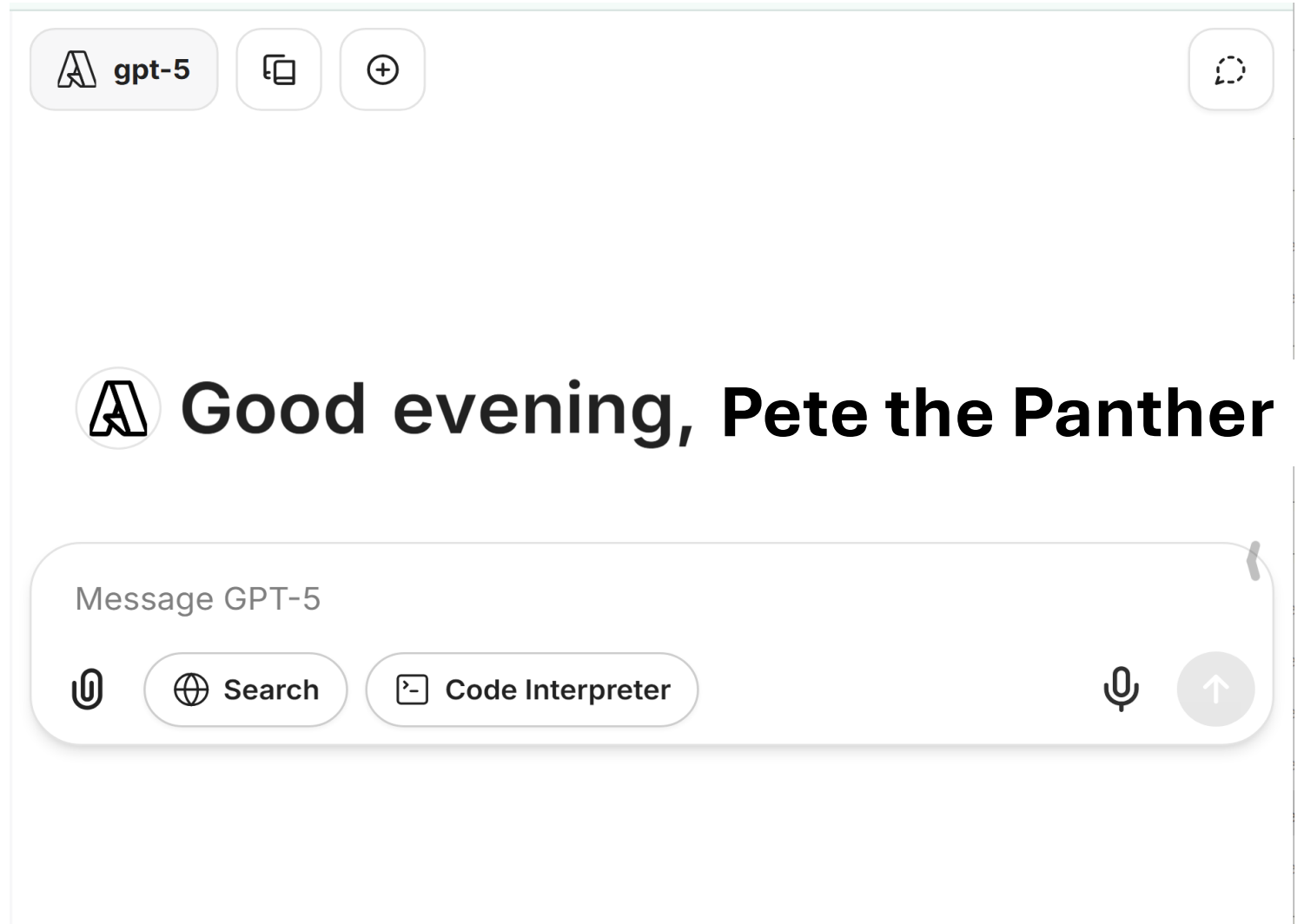
Lo, L. S. (2025). AI Literacy: A Guide for Academic Libraries. *College & Research Libraries News*, 86(3), Article 3. <https://doi.org/10.5860/crln.86.3.120>

AI at Chapman - Where We Are

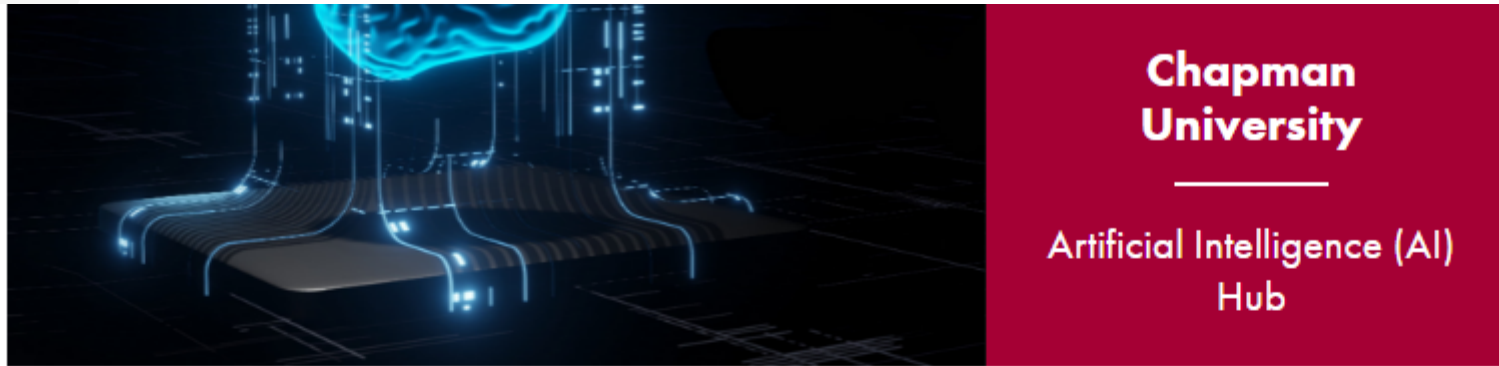
- Chapman has moved from exploration → beginnings of institutional adoption
- Campus-level:
 - AI Teaching & Learning Task Force
 - AI Advisory, & Governance Committee
- Ithaka S+R cohort participation in Defining AI Literacy Project
- PantherAI portal

PantherAI: The CU provided Multi-model AI portal

- Uses Librechat open-source technology
- Access to the latest AI technologies (e.g., ChatGPT, Gemini, Claude, Deepseek)
- Easy and safe way to use the latest AI tools
- No need to sign up for individual paid accounts!



Chapman Univ. "AI Hub"



- Chapman University AI Hub
 - Bias in AI
 - AI Key Terms
 - Approved AI Software
 - Artificial Intelligence in the Classroom
 - Chapman Considerations for Syllabus Policy on the Use of AI Generative Tools
 - Guidelines for the use of Artificial Intelligence in Research/Scholarship/Creative Activities

Get in Touch:

AI @ Chapman University

Welcome to Chapman University Artificial Intelligence (AI) Hub.

Our goal is to provide valuable insights into the dynamic realm of artificial intelligence and its underlying principles. Artificial intelligence has revolutionized numerous aspects of our lives, ranging from automation to decision-making and education. As AI continues to progress, it brings forth ethical and societal considerations that must be addressed.

This webpage is dedicated to fostering a clear comprehension of the significance of AI guidelines. These guidelines function as ethical frameworks, assisting our campus community, comprising researchers, instructors, and staff, in the responsible utilization of AI. Our mission is to keep you well-informed about the most up-to-date standards and guidelines in the AI field, ensuring that this technology is developed and deployed in harmony with Chapman University's core values.



Introducing the Approved AI Software

CEO Leadership Alliance Orange County

OC's AI Talent Hub

The State of AI in OC 2024 Report

Student Guide to Artificial Intelligence

Presented by AAC&U and Elon University

A Guide to

CHAPMAN UNIVERSITY

Gen AI Technologies at Chapman

- Things we have and teach
 - CoPilot (limited to web version)
 - Grammarly
 - Adobe Creative Suite—Firefly (limited)
 - NotebookLM
- Things we don't have but teach anyway:
 - ChatGPT
 - Perplexity
 - Consensus
 - Scite.ai

The Library's Role in AI Literacy

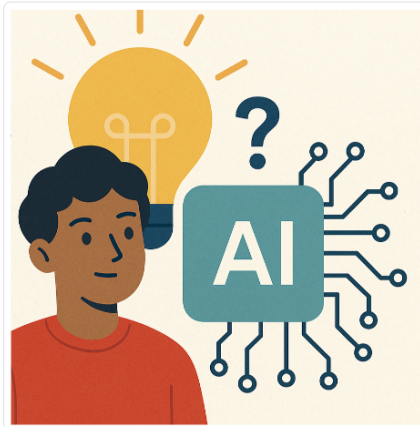
- Collaborate with departments and campus leadership
 - Presence on university AI task forces and committees.
- Presentations on Gen AI for faculty, staff, and students.
- Inserting AI Literacy into the First-Year Foundations Canvas module and library instruction session.
- Incorporating AI Literacy within our liaison library instruction sessions.
- Creation of an AI Literacy LibGuide.

AI Literacy Workshops



LEATHERBY LIBRARIES

[Chapman University](#) / [LibCal](#) / [Leatherby Libraries Workshops](#)



Level Up Your AI Literacy for Smarter Studying, Writing, and Learning



In-Person / Online

Curious about the role of AI in your academic journey? This workshop, led by Chapman librarians, introduces the fundamentals of AI Literacy, including how generative AI tools like ChatGPT function, the biases that shape their output, and key terminology to help you navigate this fast-changing technology. You'll leave with practical strategies for using AI productively and ethically in your coursework, while continuing to develop your own skills and critical thinking.

Intended for all audiences and academic disciplines. No prior experience with AI tools is necessary.

Topics will include:

- What is AI Literacy?
- How does generative AI work?
- Advice on using gen AI as a student
- Demonstrating Chapman University-approved AI tools

Event Organizer



Doug Dechow



Taylor Greene

[More events like this...](#)

Ithaka Defining AI Literacy cohort

- Ithaka S+R is partnering with 45 colleges and universities to research faculty and student needs around AI literacy.
- SCELC Research Incentive Award

April 9, 2025

Integrating AI Literacy into the Curricula

A New Cohort Project Gets Underway

Ruby MacDougall, Dylan Ruediger, Nathan Kelber, Zhuo Chen

While the technological and commercial landscape remains fluid, and the long-term impacts of AI on teaching and learning remain contested, colleges and universities are ready to shift from reactive to proactive engagement with AI. AI literacy will be a cornerstone of that engagement at many institutions. The idea that students will need to know how to use and think critically about AI is one on which skeptics, agnostics, and advocates can largely agree. A few universities have already launched AI literacy initiatives. However, efforts to define AI literacy goals and competencies within specific institutional contexts and effectively integrate them into the curricula are just beginning on many campuses.

Getting AI literacy right will require contributions from across the university. Two units with particularly vital expertise are libraries and centers for teaching and learning. Centers for teaching and learning are hubs for generating and magnifying innovative pedagogies. Libraries employ experts in the information sciences, and at many institutions have long histories as key providers of instruction about other essential modern information literacies such as data literacy or digital literacy. This experience positions them to be campus and even national leaders in these efforts.

This April, Ithaka S+R will launch a new project focused on defining and implementing AI literacy. The project will be conducted in partnership with librarians and educators at 45 colleges and universities with deep commitments to promoting AI literacy as a core learning outcome. Together, we will conduct institution-specific and landscape level research on faculty and student practices, priorities, and needs around AI Literacy, and develop actionable pathways to integrating AI literacy



Ruby MacDougall
She/her
Senior Analyst



Dylan Ruediger
He/him
Principal, The Research Enterprise

<https://sr.ithaka.org/blog/integrating-ai-literacy-into-the-curricula/>

AI Literacy in Liaison Instruction

Course Guides

[DANC 141](#)

[DANC 353](#)

[DANC 453](#)

[DANC 360](#)

[DANC 261](#)

Overview

- We'll talk about how to find things you'll need for your Dance History project
- Finding primary and secondary sources
- We'll discuss using generative AI for exploring research topics and writing research questions
- You'll have time at the end to get started on research and for one-on-one assistance

Productive use of generative AI for research assistance

Discussion

- What do you know about ChatGPT?
- How can it be used productively for research assistance?
- How can it be used productively for other purposes?
- How should students avoid using ChatGPT?

Examples:

- [PantherAI](#)
- [Research Example with PantherAI - Flamenco Dance](#)
- [Research Example with PantherAI - Julian Bream](#)

AI literacy in FFC (First-Year Foundations)

- All first-year students take an FFC class
- Canvas required library module
 - How generative AI works, in simple terms
 - Emphasizing that it is not a search
 - Describing productive vs. unwise ways to use gen AI
 - Ethical concerns
 - Discussion about potential effects on learning
- FFC Library instruction session
 - Example of using generative AI to improve search strategy
 - Prompting framework
 - Students complete a research “quest” including an AI “Wizard” on each team

FFC Library Module – AI Literacy

AI Literacy and Data Literacy

Artificial Intelligence (AI) Literacy
View

Large Language Models and Generative AI chatbots
View

Ethics of Generative AI for Students
View

AI, Learning, and Avoiding Cognitive Shortcuts

Ethics of Generative AI for Students [▲]

What are some ethical ways college students can use generative AI tools, including

[PantherAI](#), ChatGPT, Claude, Copilot, Gemini, or Perplexity?

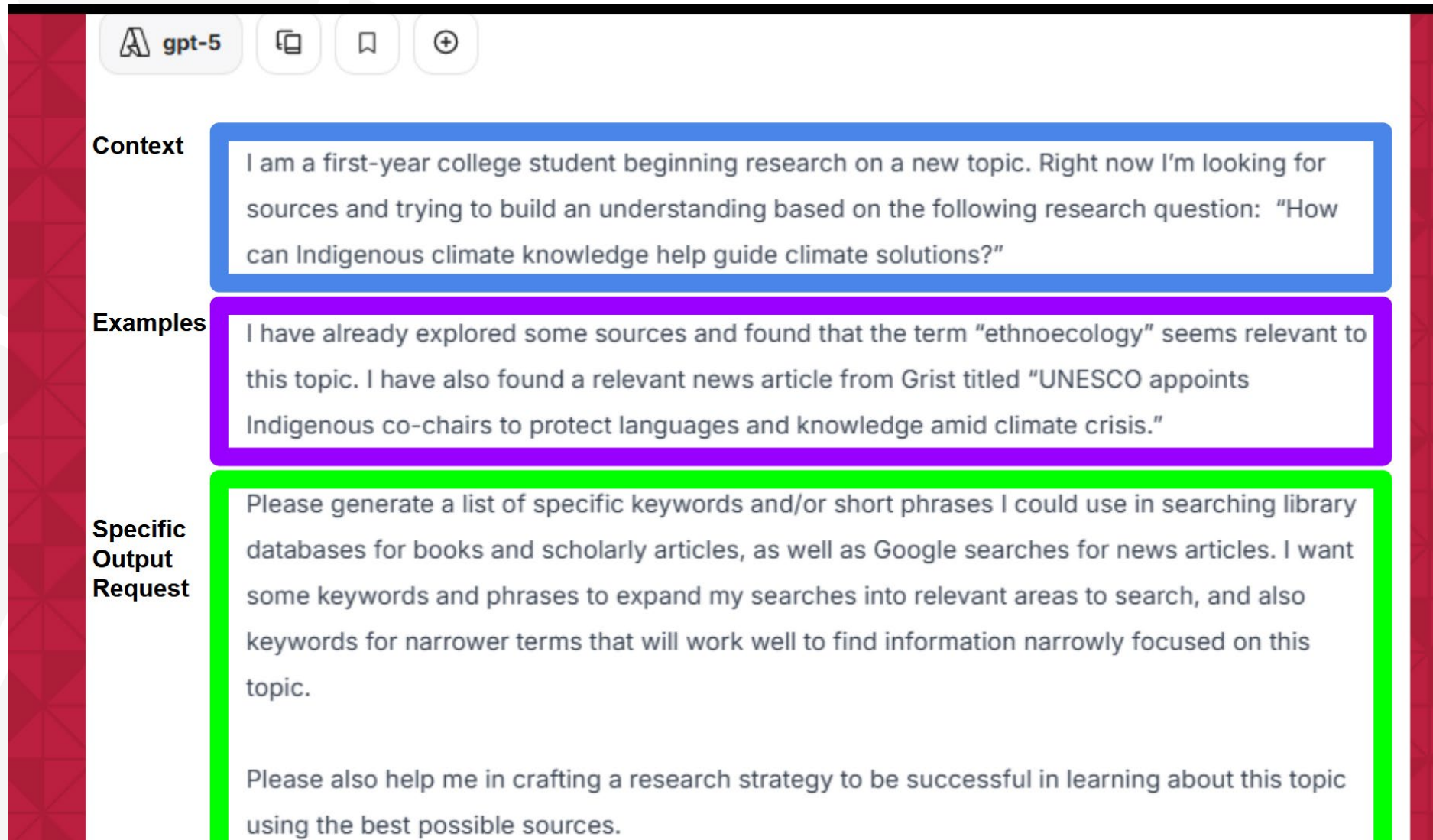
- Generate ideas to get started with research or creative pursuits
- Ask for keywords to simplify a search to get better search results
- Ask for ways to expand a topic into new research directions
- Ask for suggestions to improve your writing--such as grammar or tone--or to find weak spots in your research

All of these methods are useful in developing your research topic using a chat-enabled Large Language Model (LLM) or other generative AI tools. Notice that these tools can be ethically used in ways that support the entire research process.

What are ways to use LLM-enabled chatbots or search engines that should be avoided?

- Asking the bot to write all or part of an essay
 - Not only is this unethical, but it probably won't be very good. The chatbot hasn't been in your class and doesn't know the context of what you're supposed to have learned throughout the semester.

AI Literacy – FFC In-class Instruction



The screenshot shows a chat interface for GPT-5. At the top, there are icons for a logo, 'gpt-5', a copy icon, a bookmark icon, and a plus icon. The main content is organized into three sections:

- Context** (blue border): I am a first-year college student beginning research on a new topic. Right now I'm looking for sources and trying to build an understanding based on the following research question: "How can Indigenous climate knowledge help guide climate solutions?"
- Examples** (purple border): I have already explored some sources and found that the term "ethnoecology" seems relevant to this topic. I have also found a relevant news article from Grist titled "UNESCO appoints Indigenous co-chairs to protect languages and knowledge amid climate crisis."
- Specific Output Request** (green border): Please generate a list of specific keywords and/or short phrases I could use in searching library databases for books and scholarly articles, as well as Google searches for news articles. I want some keywords and phrases to expand my searches into relevant areas to search, and also keywords for narrower terms that will work well to find information narrowly focused on this topic.

Please also help me in crafting a research strategy to be successful in learning about this topic using the best possible sources.

Think/Pair/Share 1

- Discuss challenges and opportunities in AI literacy instruction at your institution.
 - Brainstorm on your own (2 min)
 - Pair and discuss (5 min)
 - Report out (3 min)



The Lorekeeper's Trial – FFC in-class activity

Activity - Lorekeeper's Trial - part 1

The Lorekeeper's Trial, part 1

Description:

- Work in teams (parties) of 2–4
- Each person takes on a role: Ranger, Cleric, Rogue, or Wizard
- Complete tasks to find books, news, articles, and AI-assisted insights
- Record your discoveries in your Quest Log
- Share your findings with the class at the end

Lorekeeper's Party - Roles

Role		Identity	Quest
Ranger		Book Hunter	Hunt the stacks! Use the catalog, grab the call #, find a book on 3rd floor, and snap a pic of your discovery (or how close you got).
Cleric		Misinformation Healer	Seek truth! Find a news article, test it with SIFT, check bias, trace claims, and be ready to defend its credibility.
Rogue		Information Sleuth	Sneak into scholarship! Use databases to uncover 3 peer-reviewed articles, filter to full text, and choose ones most relevant.
Wizard		Conjurer of Knowledge	Conjure with AI! Prompt PantherAI/ChatGPT to refine your question, spark new keywords, and guide your party's search.

Wizard Role Specifics

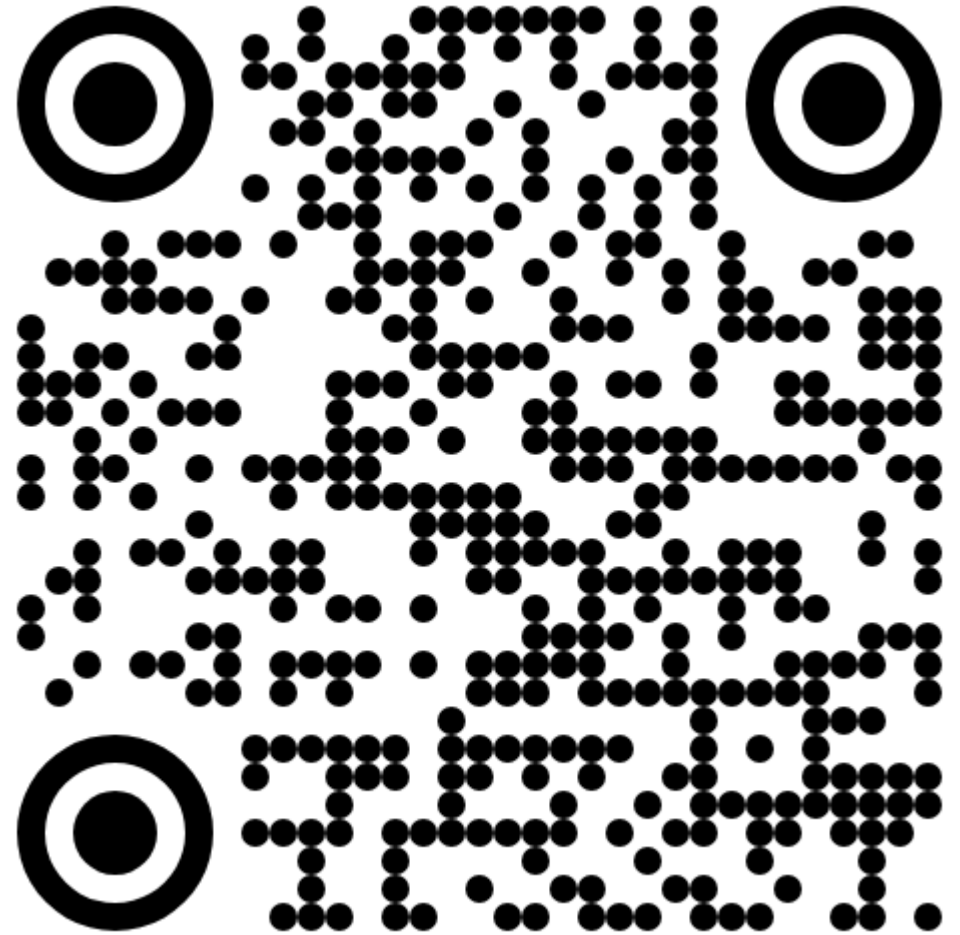
- Tips for Your Quest:
 - Use a generative AI tool (ChatGPT, Claude, or another AI tool) to get ideas and search terms.
 - Ask AI for ways to narrow, broaden, or refine your question using careful prompting.
 - Include a context for your question and a specific output you want to receive in your prompt.
 - Help teammates improve their searches by sharing AI insights.

Active Learning - Lorekeeper's Trial run-through

(25 min)

Optional – See the FFC LibGuide

- <https://libguides.chapman.edu/ffc>



Lorekeeper's Trial Run-through (15 min)

- **Assume the role of the Wizard in a (party) team of four information-seeking first-year students.**
 - Task: Use any gen AI tool to help your team brainstorm keywords, refine the research question, or suggest resources.
- Scenario A:
 - Research Question: *“Lasting effects and lessons from recent wildfires in California”*
 - Info-seeking issue from party member: **Your Cleric’s news articles don’t seem relevant to the research question. How can you help them with an AI prompt?**
- Scenario B:
 - Research Question: *“Fossil-fuel companies’ ties with politics and anti-environmentalism”*
 - Info-seeking issue from party member: **Your Ranger can’t seem to find a relevant book in the library catalog using the research question. How can you help them with an AI prompt?**

Lorekeeper's Trial - Debrief

- Discuss:
 - Reflect on your experience as the Wizard.
 - How do you imagine students interpret this role differently from an library professional?
 - How can game-based and active learning strategies can be adapted for your own instructional settings?

AI Literacy Curriculum Proposal

- The library proposed an AI Literacy Proposal for Undergraduates at Chapman University.
 - A sequence of sequentially structured units delivered to students based on their year in their undergraduate studies.
 - Each year = A Canvas module (asynchronous) and a 50-75-minute workshop.



Year	Workshop	Course Attached To	Topics Covered	Tools Covered
First-year	AI Fundamentals	FFC100	<ul style="list-style-type: none"> • What is Generative AI? • Ethics of AI Usage • Data & Biases • University Policies for Student Uses 	<ul style="list-style-type: none"> • Panther.AI • NotebookLM
Sophomore	AI Tools for Research	Required non-credit bearing workshops	<ul style="list-style-type: none"> • AI for Information Finding • Notetaking AI • Summarizing AI 	<ul style="list-style-type: none"> • Science Direct AI • Consensus • Scite.AI
Junior	Discipline Specific AI	Specified by Departments	[For example: <ul style="list-style-type: none"> • English • Chemistry] 	[For example: <ul style="list-style-type: none"> • TDM Studio • CAS Newton]
Senior	Workforce Preparedness	Capstones/Required non-credit bearing workshops	[For example: <ul style="list-style-type: none"> • Business] 	[For example: <ul style="list-style-type: none"> • Bloomberg's AI-Powered Document Insights]

Think/Pair/Share 2

- Discuss opportunities and challenges for 4-year curriculum at your institution
 - Brainstorm on your own (2 min)
 - Pair and discuss (4 min)
 - Report out (2 min)



Questions?

Thank You

Taylor Greene tgreene@chapman.edu

Doug Dechow – [dechow @chapman.edu](mailto:dechow@chapman.edu)



CHAPMAN
UNIVERSITY